

MONTHLY MEMBERSHIP PROGRESS REPORT

LOCATION OHIO

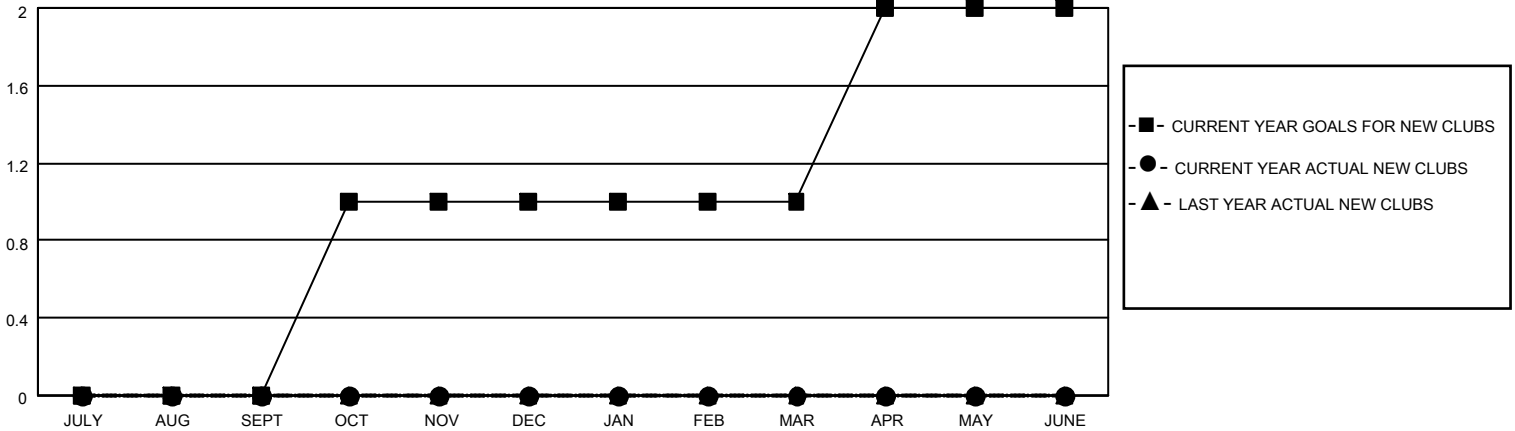
District 13 OH3

Results as of: 8/31/2023

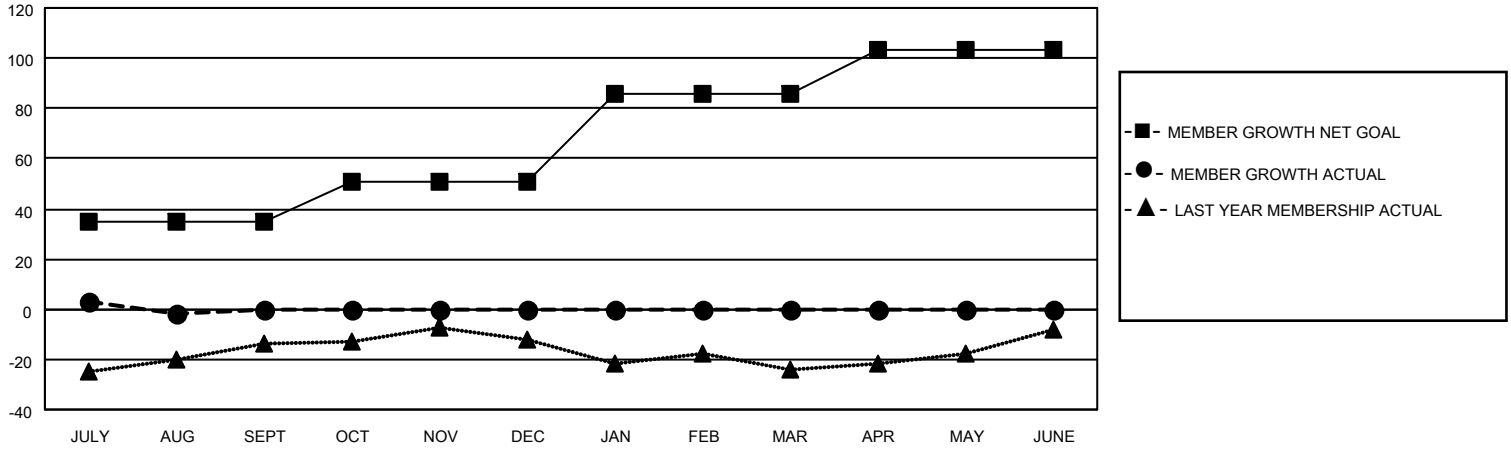
Clubs			
RESULTS FOR 2023-2024			
QUARTER	NEW CLUB GOAL	NEW CLUBS	DROPPED CLUBS
JULY/AUG/SEPT	0	0	0
OCT/NOV/DEC	1	0	0
JAN/FEB/MAR	0	0	0
APR/MAY/JUNE	1	0	0

Members			
RESULTS FOR 2023-2024			
QUARTER	MEMBER GROWTH NET GOAL	MEMBER GROWTH ACTUAL	DROPPED MEMBERS ACTUAL (including transfers)
JULY/AUG/SEPT	35	28	30
OCT/NOV/DEC	16	0	0
JAN/FEB/MAR	35	0	0
APR/MAY/JUNE	17	0	0

GOALS AND ACTUAL NEW CLUBS CUMULATIVE



GOALS AND ACTUAL MEMBERS CUMULATIVE



DROPPED CLUBS: 0

8 CLUBS OF 51 ADDED 1 OR MORE NEW MEMBERS

GENDER DISTRIBUTION

MALE	904 (65.65%)
FEMALE	472 (34.28%)
NON BINARY	0 (0.00%)
PREFER NOT TO ANSWER	1 (0.07%)

DROPPED MEMBERS

[CLICK HERE FOR CUMULATIVE MEMBERSHIP DATA](#)

DECEASED	6
CLUB CANCELLED	0
OTHER	24
TOTAL	30

TOTAL FAMILY UNIT MEMBERS	306
FAMILY MEMBERS PAYING HALF DUES	157